



### Quality is our top priority

We are certified in accordance with  
IATF 16949 : 2016  
Quality Management  
ISO 9001 : 2015  
Quality Management System  
DIN EN ISO 14001 : 2015  
Environmental Management



VS.tech GmbH  
Komponenten in Metall & Kunststoff  
Boschstrasse 1  
71679 Asperg /Germany  
Phone +49 7141 45740-00  
Fax +49 7141 45740-30  
info@vs-tech.de  
www.vs-tech.de



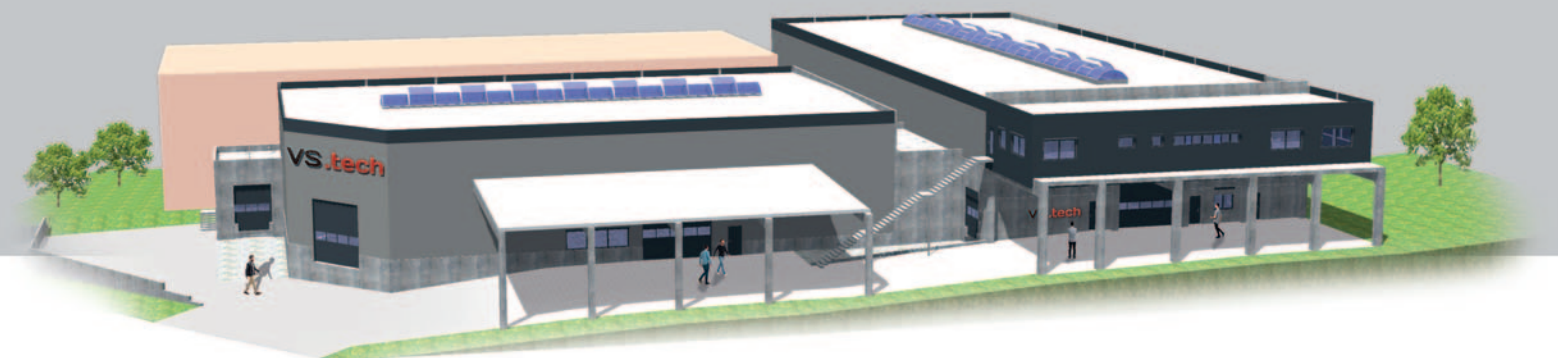
Version date: 01/2021

# Leading through innovation

Your expert partner for metal and plastic components







# More scope for productivity and growth

**A wealth of ideas and the commitment to satisfy and exceed the demands placed on us in terms of quality, precision, reliability and deadlines have made us a valuable service partner for customers from a broad cross-section of industries.**

The company VS.tech was founded in 2009 by Frank Verscaj. VS.tech is an innovative, medium-sized service company in the metal and plastics processing sector, which specialises in the manufacture of plastic components, module assembly and the production of aluminium parts for the automotive industry.

Highly qualified employees and a continuous investment in the latest technologies and state-of-the-art machining centres guarantee the uncompromising standard of our fabrication. We guarantee a first-class service, from material testing and precise compliance with all specifications to the timely delivery of the finished parts.

From spring 2021, we will have a total area of 4,400 sqm for additional office and production space. The company expansion will enable us to offer optimal conditions for productivity and growth to ensure we are well equipped for the demands of the future.







# An expert implementation of know-how

**Personal contact with the customer is our top priority. You will have a designated contact person to manage the entire order processing procedure. A minimum of bureaucracy, a high level of transparency and cooperation based on a solid partnership form the basis of the optimal implementation of your product solutions.**

Our recipe for success:

- Qualified, specialised personnel
- Quality-oriented work practices and processes
- Our high-tech production machines
- Future-oriented production building with modern ergonomic workplaces
- Many years of expertise in the milling and turning production sector
- Our quality management system
- Close and dedicated customer support
- A dynamic structure and strategy optimisation
- And last but not least, we meet the production deadline

**These are the advantages that are important for our customers and guarantee a successful working collaboration.**





# A strong partner

- Milling and turning of complex parts
  - 2.5D and 3D manufacturing
- Sample parts and prototype construction
- Component cleaning based on customer specifications
  - Flow test system

- Project management
  - Planning
- Testing and documentation

- Close customer support and contact
  - State-of-the-art plant
  - Highly qualified personnel
  - Quality-oriented work practices

- Assembly works
- Plastic components
- Reworking

- System responsibility
- Quality management
- Certified supplier network
- Digital communication

**The dynamic structure of our production with constant strategy optimization allows us to react quickly to changes and to give our customers a decisive lead in the market.**

You will receive all parts checked and ready for immediate integration into your further production process. Comprehensive quality management ensures the consistent quality of our products at every stage of production. Whether a custom-made production, small, medium or large batches, complete assembly or the reworking and technical expansion of your products, we are your expert partner for high-quality contract manufacturing.



## Fabrication (central assemblies)

We fabricate central assemblies based on your requirements to facilitate the production process. The assembly may be commissioned using parts supplied by the customer, using manufactured parts or a combination with parts provided. Quality controls before, after and during assembly are automatic for us, and are built in to our quality system.

## CNC (computer numerical control) machining

Or CNC (computer numerical controlled) turning and milling centres enable the cost-effective processing of complicated 3D structures. As a specialist in complex and precise machining, we can manufacture components from diverse materials for our customers including steel, stainless steel, plastics, non-ferrous metals and special materials.

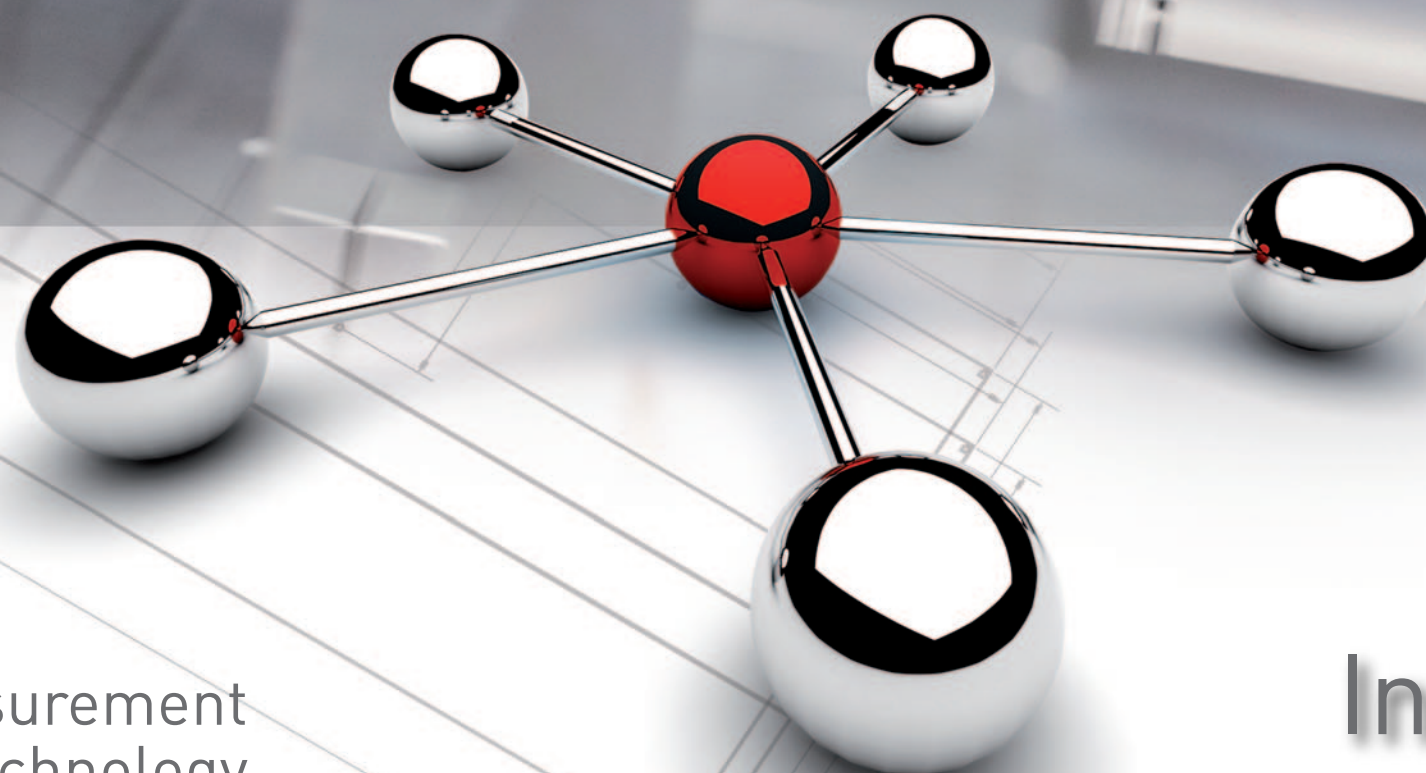
## Plastic components

We manufacture plastic components and assemblies in small, medium and large series production and in the prototype range. Our modern plant includes plastic injection moulding systems from 80 to 1,200 tons. Numerous additional processing options, from joining technology to full component assembly, are available for the finishing of plastic parts.





# We meet the highest requirements



## Measurement technology

Fully automated measurement systems monitor the manufacturing processes in series production and in the pre-series status. This ensures the quality of the manufactured products in the long term.

## Reworking

As part of a modular system, our customers' items are expanded and reworked to include technical details. Existing items are adapted through extensions, further mechanical processing steps for new assemblies within the scope of article modifications. This reduces production, storage and scrapping costs and is environmentally friendly.

## Component cleaning

Our new injection flood washing system degreases and cleans parts after processing, removing the residues from emulsion drilling fluids, chippings, grease and oils. The injection flood washing process achieves the quality of residual dirt particles on the workpiece surface you require for your component.

## Industry expertise

**Our customers include major companies from a broad cross-section of industries, who all value our technical expertise, and trust us as their reliable partner.**

We carry out small, medium and large series production and prototype construction for our customers in the sectors of mechanical engineering, electrical engineering, robotics, racing and the plastics industry.

As a system supplier in the automotive sector, we are very familiar with the current requirements and tasks and meet the highest standards of quality, reliability of supply and seamless process integration. The direct contact with our customers enables us to identify new developments at an early stage and to respond quickly and flexibly to changing market conditions.

